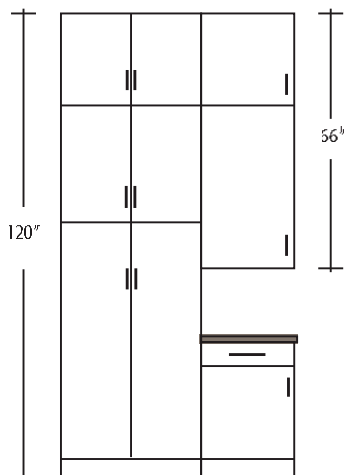


## T-54

## Stacking Cabinets

Custom cabinet configurations, or cabinets above 96" tall can be made by means of stacking cabinets. Combinations of existing **Harmoni Wall and Tall cabinets** can be ordered to create unique cabinet configurations, or to take overall cabinet heights up to 120" tall. Stacked cabinets are assembled at the factory to ship as one unit under a single finished end panel where applicable.



Ordering stacked cabinets in the **2020** Program is straight-forward, but there is a strict process to ensure your intended configuration.

- See the following procedure for identifying cabinets to be stacked and their location within the stack
- Stacked Wall Cabinets must be at least 12" tall
- Stacked Cabinets must all be the same depth
- Finished Ends must be ordered for each unit in the stacked configuration

Oversized cabinets present unique problems in shipping and installation. Make sure your cabinet can be brought into the work site and installed correctly.

Use the nomenclature **W-STACK**, **B-STACK** and **T-STACK** to instruct the factory to join an upper cabinet to a lower cabinet, and adjust the door reveals between stacked units.

	Price	Cu	
<b>W-STACK</b>	no charge	0	Stack cabinets up to 96"
<b>B-STACK</b>	no charge	0	Stack cabinets up to 96"
<b>T-STACK*</b>	725	32	Stack cabinets up to 120"

\*Nomenclature for Pricing and Cubes for T-STACK are to account for oversized materials, and additional shipping costs.

Cabinet heights include Leveler Feet adjusted to 4" high.

# CATALOG HFRM1020

## Supplier

The BentWood Companies

Wall doors: PALMER-W  
Tall doors: EURO JOINT  
Base doors: PALMER-B

Drawer fronts: PALMER-F  
Drawer pulls:  
Door pulls:

Item	Qty	User Code	Description
Beech Mel Int			

## Cabinets

1	1	U3666-24	Utility Cabinet.	1,445.00
*1.1	1	T-STACK	T-Stack [A-BOTTOM]	725.00
1.2	1	TFE-R	Finish End-Right	100.00
1.3	1	NO USK	No Shelf Kit	
2	1	W3630	Wall Cabinet	475.00
*2.1	1	W-STACK	W-Stack [A-MIDDLE]	
*2.2	1	DIM-HWID-25	Increase Depth to 24"D	150.00
2.3	1	WFE-R	Finish End-Right	75.00
2.4	1	FLUSHDOOR-BOT	Flush Door To Bottom Of Cabinet	
3	1	W3624	Wall Cabinet	475.00
*3.1	1	DIM-HWID-25	Increase Depth to 24"D	150.00
*3.2	1	W-STACK	W-Stack [A-TOP]	
3.3	1	WFE-R	Finish End-Right	75.00
3.4	1	FLUSHDOOR-BOT	Flush Door To Bottom Of Cabinet	
<b>Cabinets sub-total:</b>				<b>3,670.00</b>

**NAME THE STACK  
WITH A "LETTER"  
AS CABINET  
NUMBERS CAN  
CHANGE IN 2020.  
ADD THE  
LOCATION OF THE  
CABINET WITHIN  
THE STACK**

## Charges

*4	1	ALDER-WGHTIRON	Alder-Wrought Iron 25%	1,060.00
<i>Premium total:</i>				<i>1,060.00</i>
*5	2	PALMER	PALMER-B	290.00

